

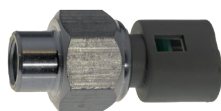
# THE MUST-HAVE 2025 OIL PRESSURE SENSORS



**1473702**

**OEM:**  
PSA 9802152780  
PSA V759253280

**MOST COMMON APPLICATION:**  
208 I 1.6 HDi  
2013/2019



**1473707**

**OEM:**  
Renault 497610324R

**MOST COMMON APPLICATION:**  
Sandero II TCe  
2012/-



**1473704**

**OEM:**  
VAG 04C906060C

**MOST COMMON APPLICATION:**  
Polo VI 1.0 TSI  
2017/-



**1473701**

**OEM:**  
PSA 9674035780

**MOST COMMON APPLICATION:**  
2008 I 1.2 THP  
2015/-



**1473709**

**OEM:**  
PSA 9677899580

**MOST COMMON APPLICATION:**  
206 3/5 portes 1.4i  
1998/2012



**1473713**

**OEM:**  
Ford 1076647

**MOST COMMON APPLICATION:**  
Focus II 1.6 TDCi  
2005/2012



**1473714**

**OEM:**  
BMW 34521164458

**MOST COMMON APPLICATION:**  
3 320d  
1998/2001



**1473705**

**OEM:**  
Ford 1866362

**MOST COMMON APPLICATION:**  
Fiesta VI 1.5 TDCi  
2012/2017



**TECHNICAL HOTLINE**

+33 (0)4 72 88 12 63

hotline.aftermarket@efiautomotive.com